



Voting is as Easy as 1-2-3!

1. Sign up to vote

You can sign up to vote if you are:

- 18 years or older by Election Day
- a U.S. citizen
- not in prison or on parole for a felony

To sign up to vote, get a registration form:

- Fill out the form online at registertovote.ca.gov in English, Spanish, Chinese, Hindi, Japanese, Khmer, Korean, Tagalog, Thai, or Vietnamese.
- Or call 1-800-345-8683 to have the form sent to you.
- Or pick one up at the library, post office, or DMV.

There is no cost to register. Fill out the form completely and mail it in. You will be asked to include your driver's license number or other identification.

When should I sign up?

- Sign up (register) by May 23, 2016, to vote in the June 7, 2016, election.
- If you are already registered, you need to fill out a new form only if you move, change your name, or want to change your choice of political party.

2. Get ready to vote

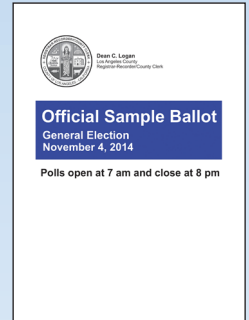
Get informed

Before you vote, get to know about the issues and candidates in this election. You do not have to vote on everything. You can just vote on the things you most care about.

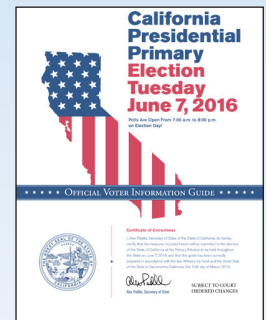
To help you prepare, all registered voters get two booklets in the mail:

- A *Sample Ballot* that lists all of the candidates and measures that will be on your ballot. It also shows where you vote (your "polling place"). This booklet is sent by your county elections office.
- The *Voter Information Guide* with information about statewide candidates and ballot measures. This booklet is from the California Secretary of State's Office.
- You can also visit easyvoterguide.org and votersedge.org/ca to learn more about the candidates and propositions on your ballot.

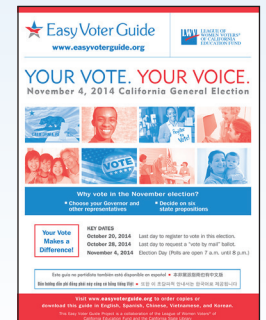
All of these resources have nonpartisan information, which means they just give facts and do not take sides about how you should vote. You may also get mail from campaigns or hear advertisements trying to tell you how to vote; these are partisan.



Example of Sample Ballot



Voter Information Guide



Easy Voter Guide

Voting is as Easy as 1-2-3!

Decide how you will vote

You can choose if you want to vote:

1. At your polling place
2. At home with a “vote by mail” ballot
3. In “early voting” before election day at locations chosen by your county elections office.

Find your polling place by looking at your address label or the back cover of the Sample Ballot from your county elections office. Or, you can look it up at votersedge.org/ca.

3. Go vote!

What happens if I vote at my polling place?

- You will be asked your name and for your signature to be able to vote.
- If you are a first-time voter, you may be asked to show identification.
- The pollworker will give you a paper ballot to mark in a private booth or a card to put into a voting machine.
- If your name is not on the list of voters, you can still vote with a “provisional” ballot. You can ask for the number to call to find out if your vote was counted.
- Do not feel rushed, and ask for help if you need it. **Ask for another ballot if you need to start over.**

What if I vote at home with a mail-in ballot?

- You must apply for a vote-by-mail ballot in writing. You can sign up when you register to vote or use the application that comes with your Sample Ballot.
- Your request must be received by your county elections office by May 31, 2016, to vote in the June 7 election.
- After you fill out the ballot be sure to sign it and mail in the completed ballot postmarked on or before election day. Or, you can drop it off at any polling place in your county on election day. You must sign your ballot for your vote to be counted.
- If you change your mind and want to vote at your polling place, you can do that. Just bring your mail-in ballot and envelope to trade it in for an in-person ballot.

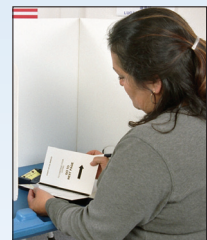
In many counties, you may also be able to vote before election day. Check with your county elections office for early voting locations.



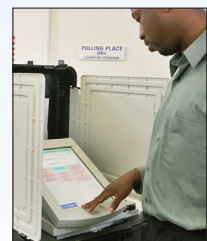
Signing in at the
polling place



Getting your ballot
or computer card



Voting with a
paper ballot



Voting with a
voting machine

Visit easyvoterguide.org to download additional copies of this flyer.

ABOUT THE EASY VOTER GUIDE PROJECT:

The Easy Voter Guide is a project of the League of Women Voters of California Education Fund and has been providing new voters and busy voters with nonpartisan information for statewide elections in California since 1994. Please send questions or suggestions about the project to easyvoter@lwvc.org.

The Easy Voter Guide project is made possible in part by the U.S. Institute of Museum and Library Services under the provisions of the Library Services and Technology Act, administered in California by the State Librarian.

The League of Women Voters® of California Education Fund is a 501(c)(3) nonpartisan organization that encourages informed and active participation in government and works to increase understanding of major public policy issues. For more information, go to cavotes.org.